

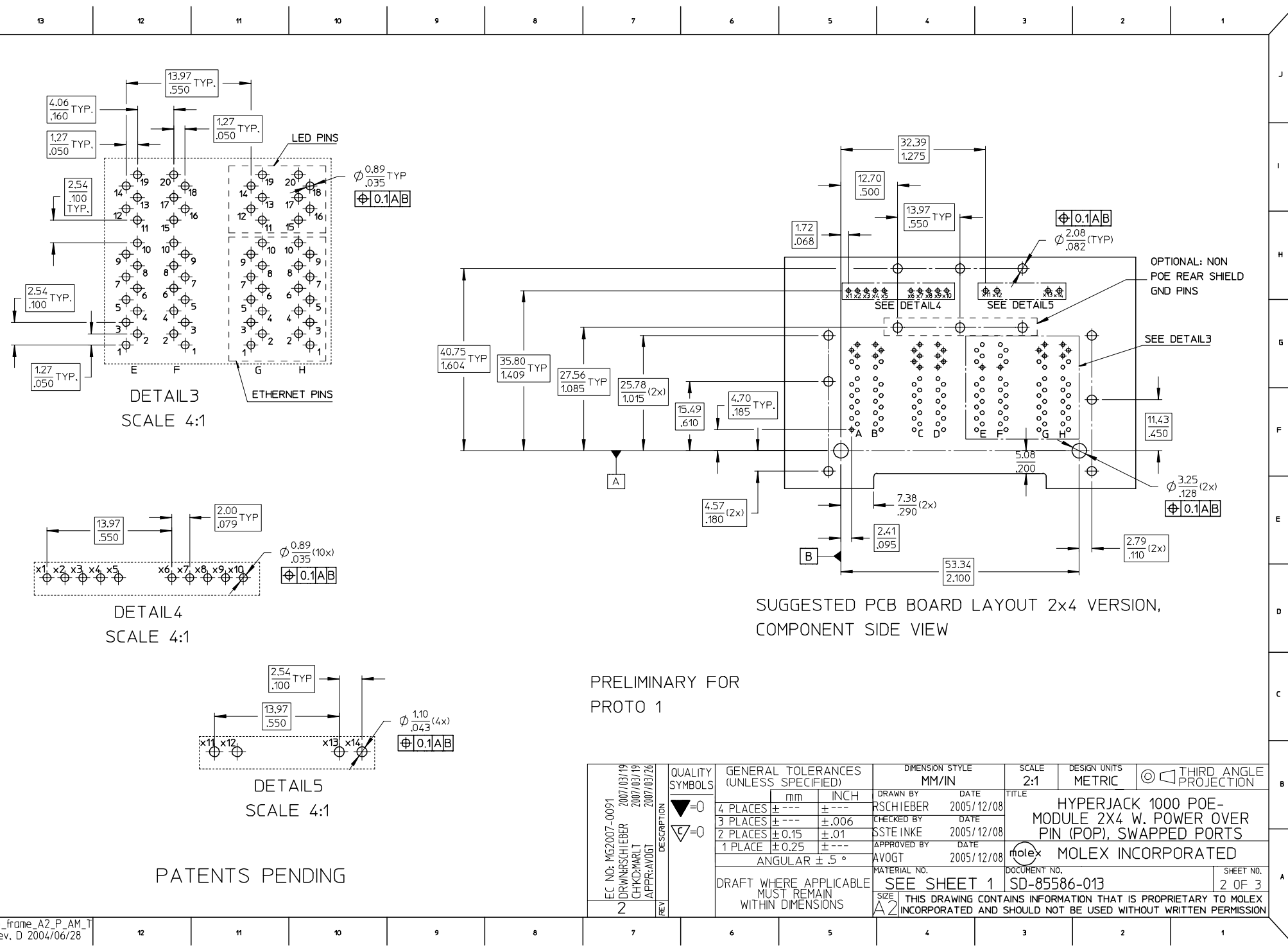
MATERIAL NUMBER	NUMBERS OF PORTS	DIM -C-	DIM -D-	SEE NOTE
85586-1003	4/4	4.0/0.157	3.8/0.150	12

PATENTS PENDING

NOTES:

- 1- SHIELD MATERIAL: BRASS; PLATING: NICKEL
- 2- HOUSING MATERIAL: THERMOPLASTIC UL 94-V0, COLOR BLACK
- 3- TERMINAL: PHOSPHOR BRONZE  
PLATING:  
POSTPLATE OR SPOTPLATE 0.00127 / .00005 MIN GOLD  
OVER 0.00127 / .00005 MIN NICKEL IN CONTACT AREA  
0.00190 / .000075 MIN 100% TIN IN TAIL AREA, BOTH OVER  
0.00127 / .000050 MIN NICKEL OVER ALL.
- 4- JACK TO BE MATCHED WITH F.C.C. 68.5 PLUGS (MOLEX-PLUGS: 85568,95043,90075-SERIES)
- 5- PRODUCT SPECIFICATION: PS-85586-001
- 6- PACKAGING SPECIFICATION: PK-85586-001
- 7- RECOMMENDED PCB LAYOUT AND PANEL CUT OUT SEE SHEET 2
- 8- NO TRACES WITHOUT INSULATION ALLOWED ON BOARD PCB IN THIS DASHED AREAS UNDER THE METAL SHIELD
- 9- PIN LENGTH FOR RECOMMENDED PCB MAX. THICKNESS OF .140" REFER TO STANDARD IPC 610 REVISION C, CLASS 2
- 10- STAND-OFF PLANE TO CUSTOMER PCB
- 11- PLEASE REQUEST MOLEX FOR A FRENCH INSTALLATION MANUAL IF DISTRIBUTED IN CANADA

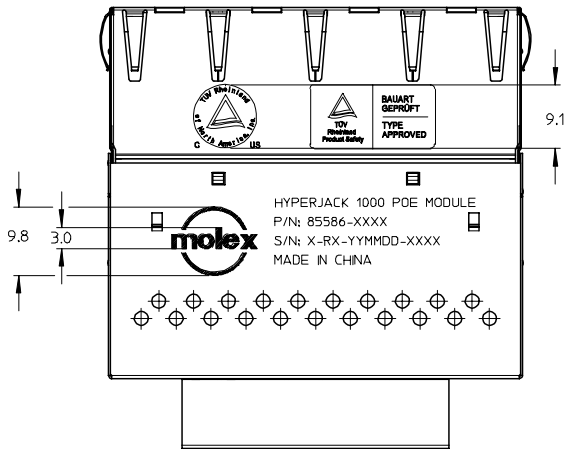
REV	DESCRIPTION	QUALITY SYMBOLS	GENERAL TOLERANCES (UNLESS SPECIFIED)		DIMENSION STYLE		SCALE	DESIGN UNITS	THIRD ANGLE PROJECTION	
			mm	INCH	MM/IN	DATE	TITLE	MATERIAL NO.	DOCUMENT NO.	SHEET NO.
2	EC NO. MG2007-0091 DRAWN: RSCHIEBER 2007/03/19 CHKD: MARLT 2007/03/19 APPR: AVOGT 2007/03/26	▽=0 ▽=0	4 PLACES ± ---	± ---	MM/IN	2005/12/08	2:1	METRIC	HYPERJACK 1000 POE-MODULE 2X4 W. POWER OVER PIN (POP), SWAPPED PORTS	
			3 PLACES ± ---	± .006		DATE			MOLEX INCORPORATED	
			2 PLACES ± 0.15	± .01		DATE			SD-85586-013	
			1 PLACE ± 0.25	± ---		DATE			1 OF 3	
			ANGULAR ± 5 °			DATE			THIS DRAWING CONTAINS INFORMATION THAT IS PROPRIETARY TO MOLEX INCORPORATED AND SHOULD NOT BE USED WITHOUT WRITTEN PERMISSION	
			DRAFT WHERE APPLICABLE MUST REMAIN WITHIN DIMENSIONS			DATE				



PRELIMINARY FOR  
PROTO 1

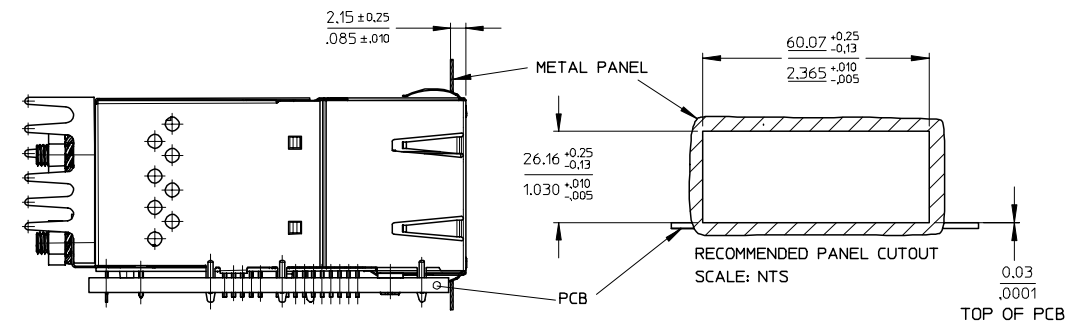
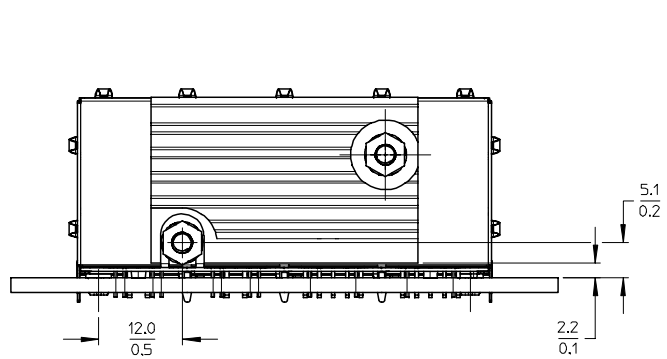
PATENTS PENDING

EC NO. MG2007-0091 DRAWN RSCHIEBER 2007/03/19 CHKD: MARL 2007/03/19 APPR: AVOST 2007/03/26 REV 2	DESCRIPTION HYPERJACK 1000 POE-MODULE 2X4 W. POWER OVER PIN (POP), SWAPPED OVER	QUALITY SYMBOLS ▽=0 ▽=0	GENERAL TOLERANCES (UNLESS SPECIFIED) 4 PLACES ± --- ± --- 3 PLACES ± --- ± .006 2 PLACES ± 0.15 ± .01 1 PLACE ± 0.25 ± --- ANGULAR ± 5 °	DIMENSION STYLE MM/IN	SCALE 2:1	DESIGN UNITS METRIC	THIRD ANGLE PROJECTION
		DRAWN BY RSCHIEBER	DATE 2005/12/08	CHECKED BY SSTE INKE	DATE 2005/12/08	APPROVED BY AVOST	DATE 2005/12/08
DRAFT WHERE APPLICABLE MUST REMAIN WITHIN DIMENSIONS			SEE SHEET 1	MOLEX INCORPORATED		SHEET NO. 2 OF 3	THIS DRAWING CONTAINS INFORMATION THAT IS PROPRIETARY TO MOLEX INCORPORATED AND SHOULD NOT BE USED WITHOUT WRITTEN PERMISSION



NOTES:

- 1- MOLEX LOGO, TUV LOGO AND INSCRIPTION TO BE MARKED WITH LASER PRINTER
- 2- INSCRIPTION:
  - 1st LINE: PART NAME
  - 2nd LINE: PART NUMBER
  - 3rd LINE: SERIES NUMBER -> MANUFACTURER ID - CONNECTOR REVISION - DATE CODE (YEAR, MONTH, DAY) - CONSECUTIVE NUMBER
  - 4th LINE: COUNTRY OF ORIGIN



EC NO: MG2007-0091 2 DRW:RSCHIEBER 2007/03/19 CHK:MARLT 2007/03/19 APPR:AVOGT 2007/03/26 REV DESCRIPTION	QUALITY SYMBOLS	GENERAL TOLERANCES (UNLESS SPECIFIED)	DIMENSION STYLE	SCALE	DESIGN UNITS	THIRD ANGLE PROJECTION
	$\nabla=0$ $\nabla=0$	mm INCH 4 PLACES ± --- ± --- 3 PLACES ± --- ± .006 2 PLACES ± 0.15 ± .01 1 PLACE ± 0.25 ± --- ANGULAR ± 5 °	MM/IN	2:1	METRIC	DRAWN BY DATE RSCHIEBER 2005/12/08 CHECKED BY DATE SSTE INKE 2005/12/08 APPROVED BY DATE AVOGT 2005/12/08
	DRAFT WHERE APPLICABLE MUST REMAIN WITHIN DIMENSIONS	SEE SHEET 1	TITLE		HYPERJACK 1000 POE-MODULE 2X4 W. POWER OVER PIN (POP), SWAPPED PORTS	
			MATERIAL NO. DOCUMENT NO.		MOLEX INCORPORATED	
		SIZE A2		SD-85586-013		SHEET NO. 3 OF 3